



### MAIN FEATURES

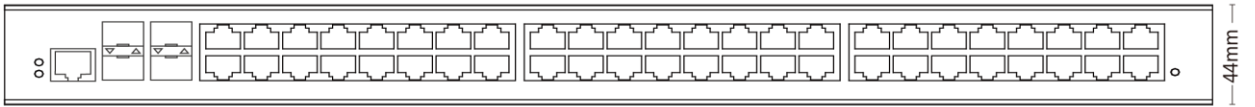
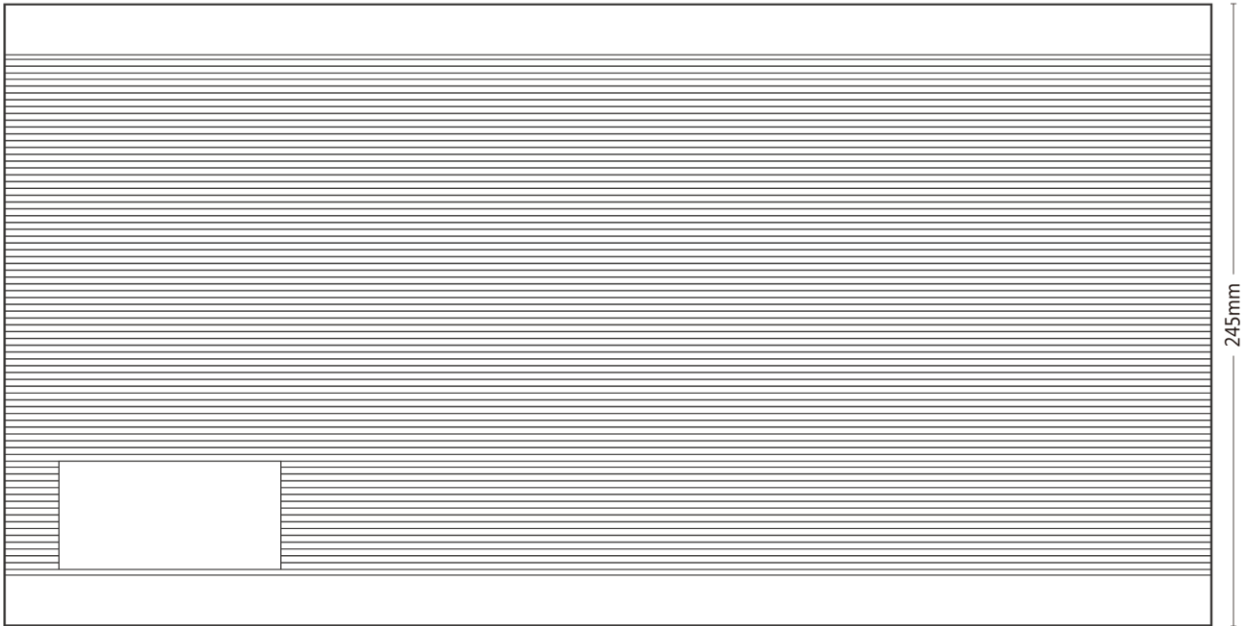
<b>P/N</b>	SIS85-4XG48GT-HR-V
<b>Fixed port</b>	4*10G Base-X, 48*10/100/1000 Base-T
<b>Management</b>	Yes
<b>PoE Support</b>	No
<b>Input Voltage</b>	DC 12-58V /AC 100-240V 50-60HZ
<b>ESD</b>	IEC 61000-4-2 Level 4 (8K/15K)
<b>Thermal methods</b>	Fanless design, natural cooling
<b>MTBF</b>	100,000 hours
<b>Certificates</b>	CCC/CE/FCC/RoHS

### SPECIFICATION

<b>Provider Mode Ports</b>	
Fixed port	4*10G Base-X, 48*10/100/1000 Base-T
Management Port	Support console
Power interface	Phoenix terminal, dual power supply redundancy
LED Indicators	PWR, Link/ACT LED
<b>Cable Type &amp; Transmission Distance</b>	
Twisted-pair	0-100m (CAT5e,CAT6)
Monomode optical fiber	20/40/60/80/100KM
Multimode optical fiber	550m
<b>Network Topology</b>	
Ring topology	Support
Star topology	Support
Bus topology	Support
Tree Topology	Support
Hybrid topology	Support
<b>Electrical Specifications</b>	
Input voltage	DC 12-58V /AC 100-240V 50-60HZ
Total Power consumption	<35W
<b>PoE Support</b>	
PoE port	None
PoE Protocol	None
Pin Assignment	None
PoE Mode	None
<b>Layer 2 Switching</b>	
Switching capacity	336G
Packet forwarding rate	114 Mpps
MAC address table	16K
VLAN	Support 4K
Buffer	12M
Forwarding delay	<10 μs
MDX/MIDX	Support
Flow control	Support
Jumbo Frame	Support10 Kbytes
Spanning Tree	Support STP/RSTP/MSTP
Ring Protocol	Support ERPS
Link Aggregation	Support 12 Groups

Multicast	Support IGMP Snooping
Port Mirroring	Support
Storm Control	Support
Interface Counters	Support
QINQ	Support
802.1X	Support
Radius/Mac authentication	Support
Port Isolation	Support
Rmon	Support
NTP client	Support
DHCP client	Support
DHCP snooping	Support
Ping/tracer detection	Support
Dying gasp	Support
Fiber module DDM	Support
<b>Layer 3 Route</b>	
Static Routes	-
<b>Convergence</b>	
ACL	Support ACL 500 lines; Support IP standard ACL; Support MAC extended ACL; Support IP extended ACL
QoS	Support QoS re-marking, priority mapping; Support SP, WRR queue scheduling; Support egress rate-limited, egress rate-limit; Support Policy-based QoS
<b>Management</b>	
CLI	Support
Console	Support
IP	Support IPv4/IPv6
Telnet	Support
WEB	Support
SNMP	Support SNMPv1/v2c/v3
User	Support
System Log	Support
Configuration File Download/Upload	Support
Upgrade Firmware	Support
<b>Environment</b>	
Operating temperature	-40°C~+75°C The device is tested for 4 hours at temperatures in 85°C
Storage temperature	-40°C~+85°C
Relative humidity	5%~95% (non-condensing)
Thermal methods	Fanless design, natural cooling
MTBF	100,000 hours
<b>Mechanical Dimensions</b>	
Product size	440*245*44mm
Installation Method	Rack mounted
Weight	3.1KG
<b>EMC &amp; Ingress Protection</b>	
IP Level	IP40
Surge protection of Power	DC: IEC 61000-4-5 Level X (8KV/8KV) (8/20 μs); AC: IEC 61000-4-5 Level 3 (4KV/2KV) (8/20 μs)
Surge protection of Ethernet port	IEC 61000-4-5 Level 3 (4KV/2KV) (10/700 μs)
RS	IEC 61000-4-3 Level 3 (10V/m)
EFI	IEC 61000-4-4 Level 3 (1V/2V)
CS	IEC 61000-4-6 Level 3 (10V/m)
PFMF	IEC 61000-4-8 Level 4 (30A/m)
DIP	IEC 61000-4-11 Level 3 (10V)
ESD	IEC 61000-4-2 Level 4 (8K/15K)
Free fall	0.5m
<b>Authentication</b>	
Certificates	CCC/CE/FCC/RoHS
Accessories	Device, Terminals, Specification, Certificate, Adapter(optional)

SIZE AND APPEARANCE



440mm  
前视图